



RenQuip

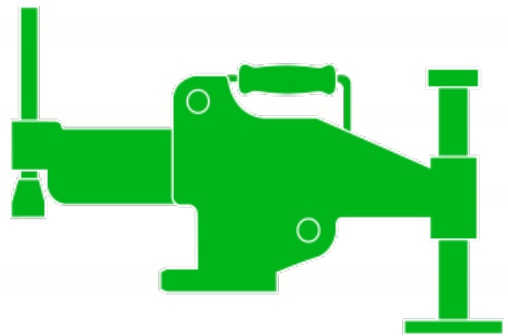
OPERATION MANUAL

PH300S

PH580S

PH1100S

Single Acting Sealed
Hydraulic Hand Pumps



Engineered Energy Equipment

www.renquip.com



Contents

1. Introduction	Page 2
2. Safety information	Page 3
3. Specification	Page 4
4. Operation	Page 5
5. Maintenance	Page 7
6. Refill Oil Reservoir	Page 8
7. Parts List	Page 9

1.0 Introduction

The RenQuip PH range of hand pumps are of 2 speed design to give fast operation with low handle effort. All pumps are rated for all 10,000psi / 700Bar equipment. The pumps are equipped with a flexible reservoir that contracts when oil is pumped from the reservoir into the system – this removes the requirement for an air vent and eliminates the possibility of accidental oil spillage from the reservoir.

The flexible reservoir enables the pump to be used in any orientation without the risk of air entering the hydraulic system. It also prevents contamination or debris entering the hydraulic system from the atmosphere making Renquip pumps ideal for use on site and in the workshop.

2.0 Safety Information

User Safety



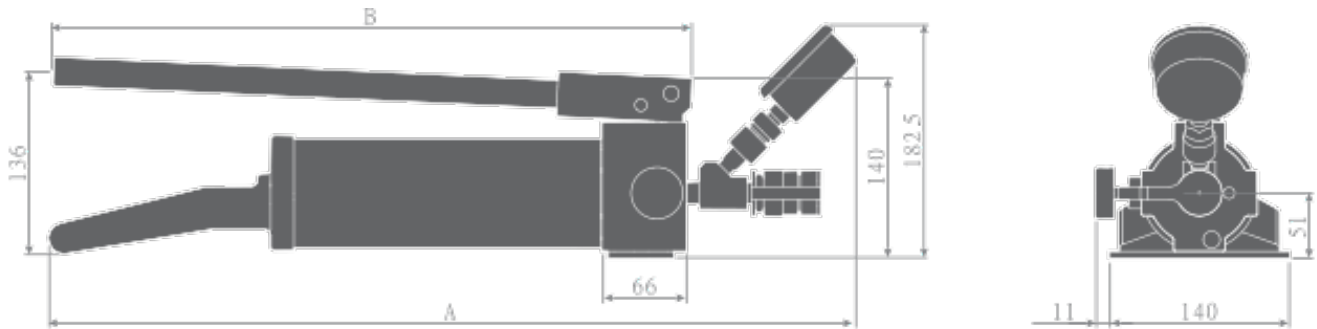
1. The User must be competent in Operating High Pressure Hydraulic Equipment.
2. The User must read and understand the relevant Instruction Manual for the Equipment.
3. The User must wear the correct Personal Protective Equipment .
4. Do not lift or hold pressurised equipment

Equipment Safety



1. Inspect all equipment prior to use for any signs of damage or wear.
2. Ensure all components have a safe working pressure of 10,000psi (700Bar).
3. Do not pressurise equipment over its safe working pressure.
4. Ensure all couplers are fully connected before pressurising the system.
5. Ensure system is fully depressurised before disconnecting couplers.
6. Ensure the working area is free from hazards to the equipment such as sharp objects, heat sources , moving machinery or vehicles.
7. Carry / transport equipment by the handles / cases provided.
8. Store Equipment in a cool dry environment .
9. Ensure the correct oil is used in the hydraulic system and maintenance procedures are followed.

3.0 Technical Specification



Pump Type	Reservoir Capacity CC	Length A mm	Length B mm	Pump Weight Kg
PH300S	300	554	360	4.5
PH580S	580	643	490	5.0
PH1100S	1100	867	537	6.0

Kit Content: PH300S

- 1 x PH300S Sealed Hydraulic Hand Pump.
- 1 x Hydraulic Pressure Gauge.
- 1 x Hydraulic Gauge Adaptor.
- 1 x 3/8" Female half screw coupler

Product ordering code: PH300S

Kit Content: PH580S

- 1 x PH580S Sealed Hydraulic Hand Pump.
- 1 x Hydraulic Pressure Gauge.
- 1 x Hydraulic Gauge Adaptor.
- 1 x 3/8" Female half screw coupler

Product ordering code: PH580S

Kit Content: PH1100S

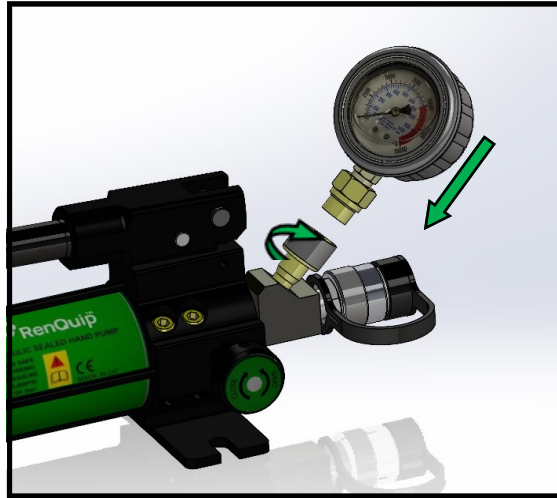
- 1 x PH1100S Sealed Hydraulic Hand Pump.
- 1 x Hydraulic Pressure Gauge.
- 1 x Hydraulic Gauge Adaptor.
- 1 x 3/8" Female half screw coupler

Product ordering code: PH1100S

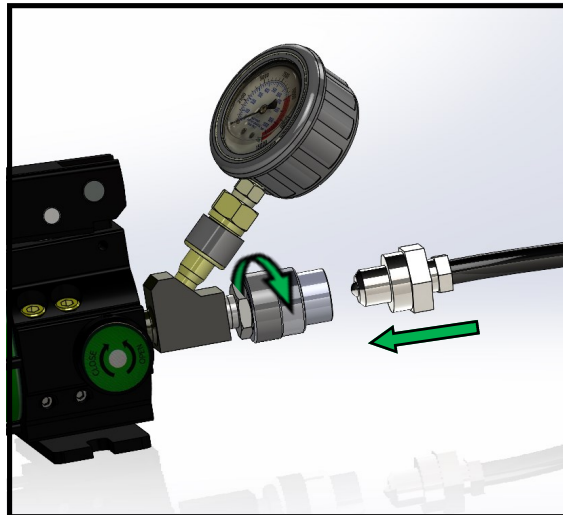


4.0 Operation of the PH****S Pumps

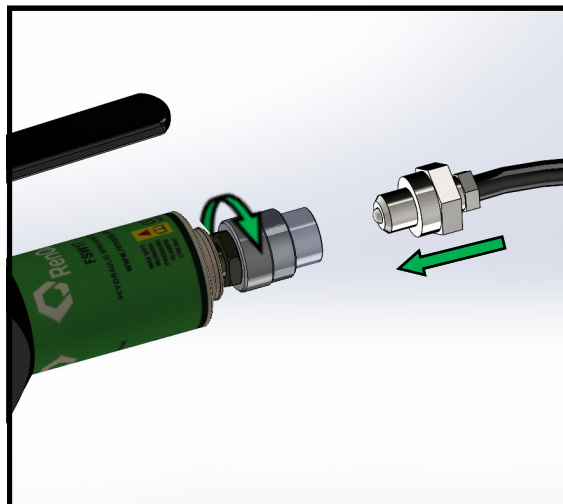
1. Connect the Gauge to the Pump.



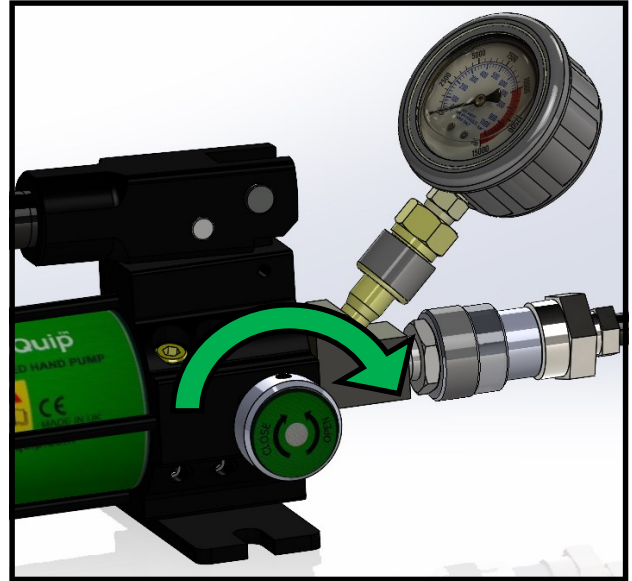
2. Connect the Hose to the Pump.



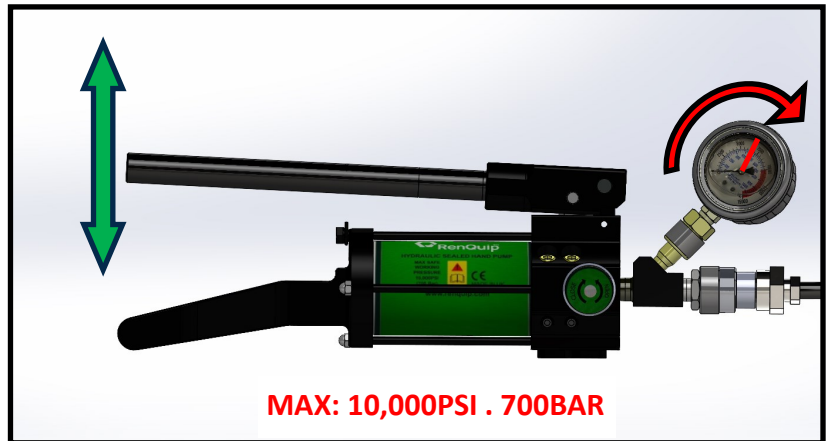
3. Connect the Hose to the Tool.



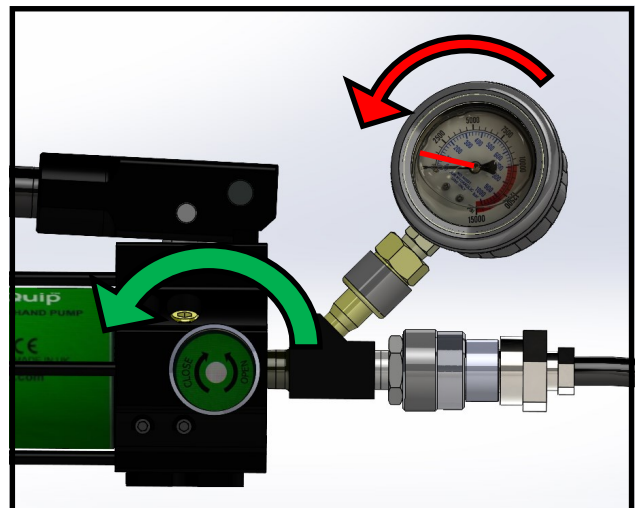
4. Close the Pressure Release Valve.



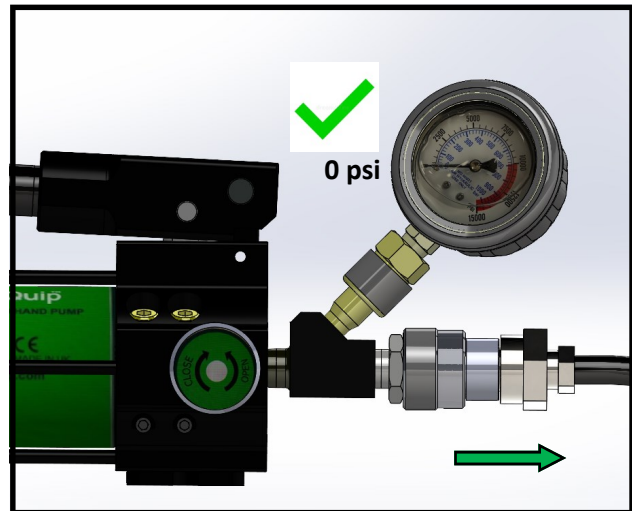
5. Operate Pump handle to pressurise system.



6. Open the Pressure Release Valve to depressurise the system .



7. Ensure the system is fully depressurised before disconnecting couplers.



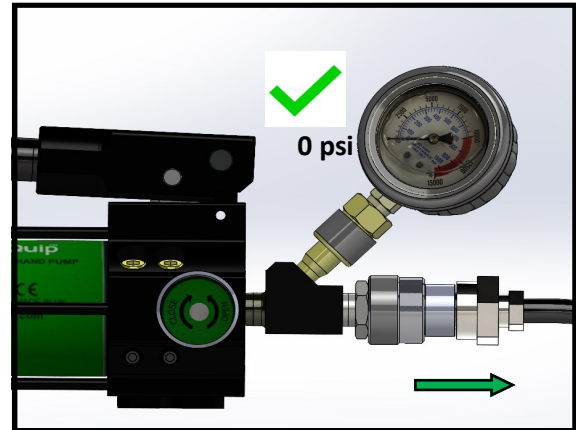
8. Clean equipment and package for storage.

5.0 Maintenance

- Visually Inspect Pump, Gauges and couplers for any damage.
- Replace any worn or damaged parts.
- Clean and degrease surfaces , couplers and Gauges.
- Ensure protective caps are fitted to cleaned couplers.
- Lubricate all moving parts with light Oil.
- Top up hydraulic oil as required with a high quality 32cSt hydraulic oil.
- Store pumps in a cool, dry, and low humidity location.

6.0 How To Refill Oil Reservoir

1. Ensure the system is fully depressurised and disconnect coupler.



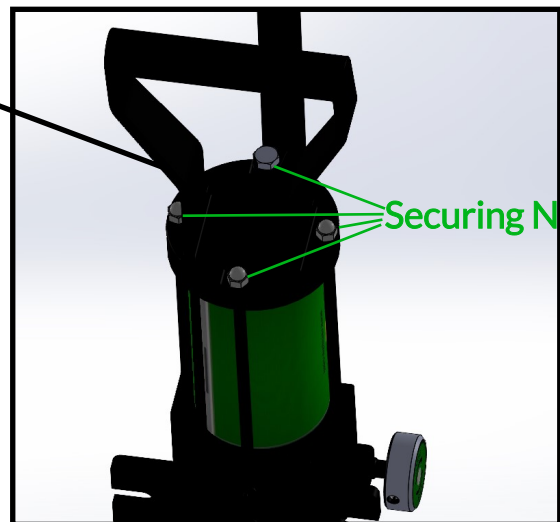
2. Grip the base plate of the pump in a vice ensuring that the reservoir is vertical



3. remove the 4 securing nuts and lift off the Main Handle

MAIN HANDLE

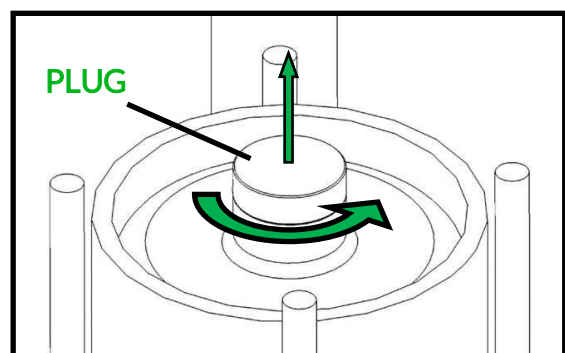
Securing Nuts



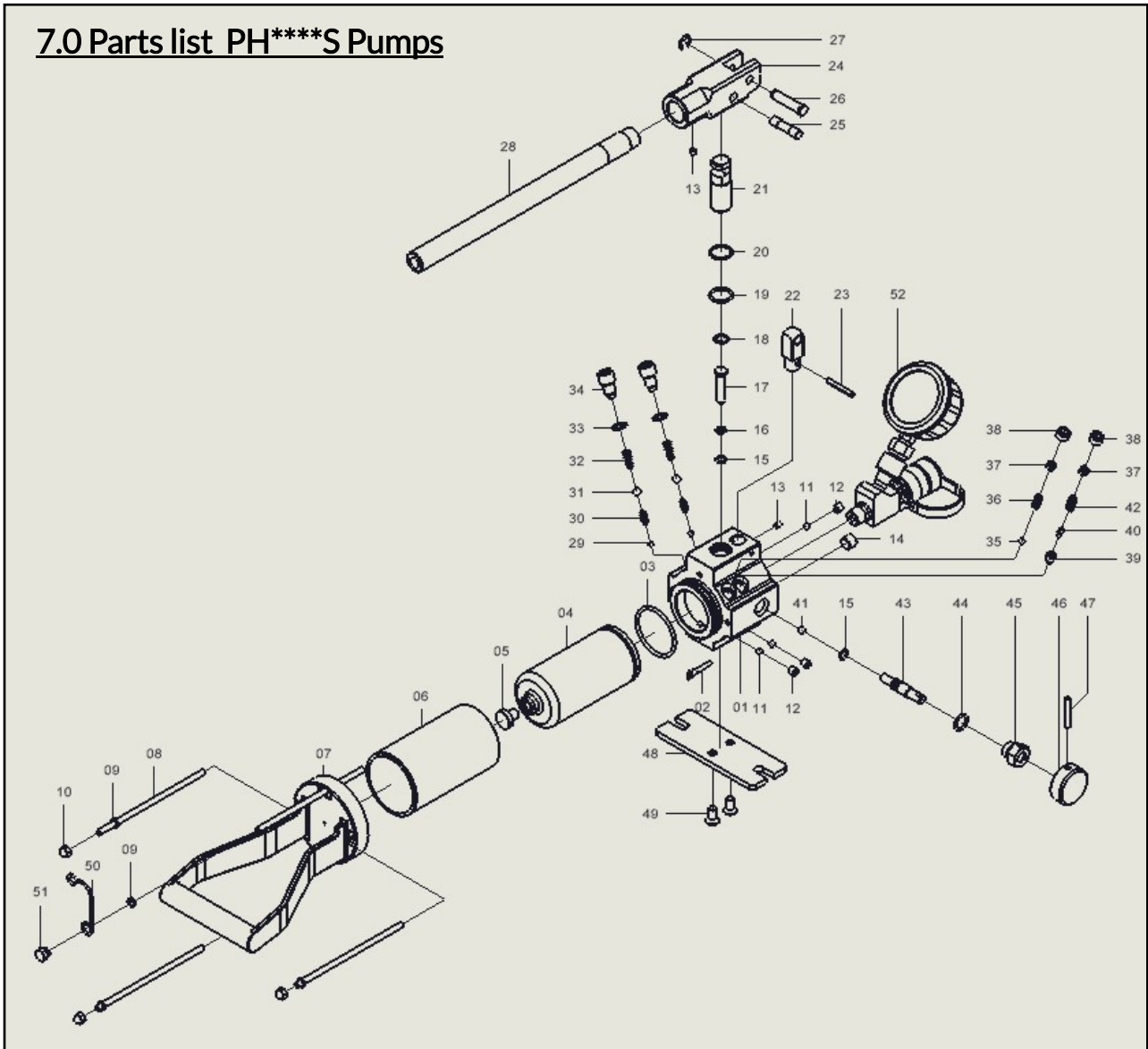
4. Twist and pull to remove the refill plug .

5. Top up with a high quality 32cSt hydraulic oil to just below the top of the reservoir.

Replace th plug and handle .



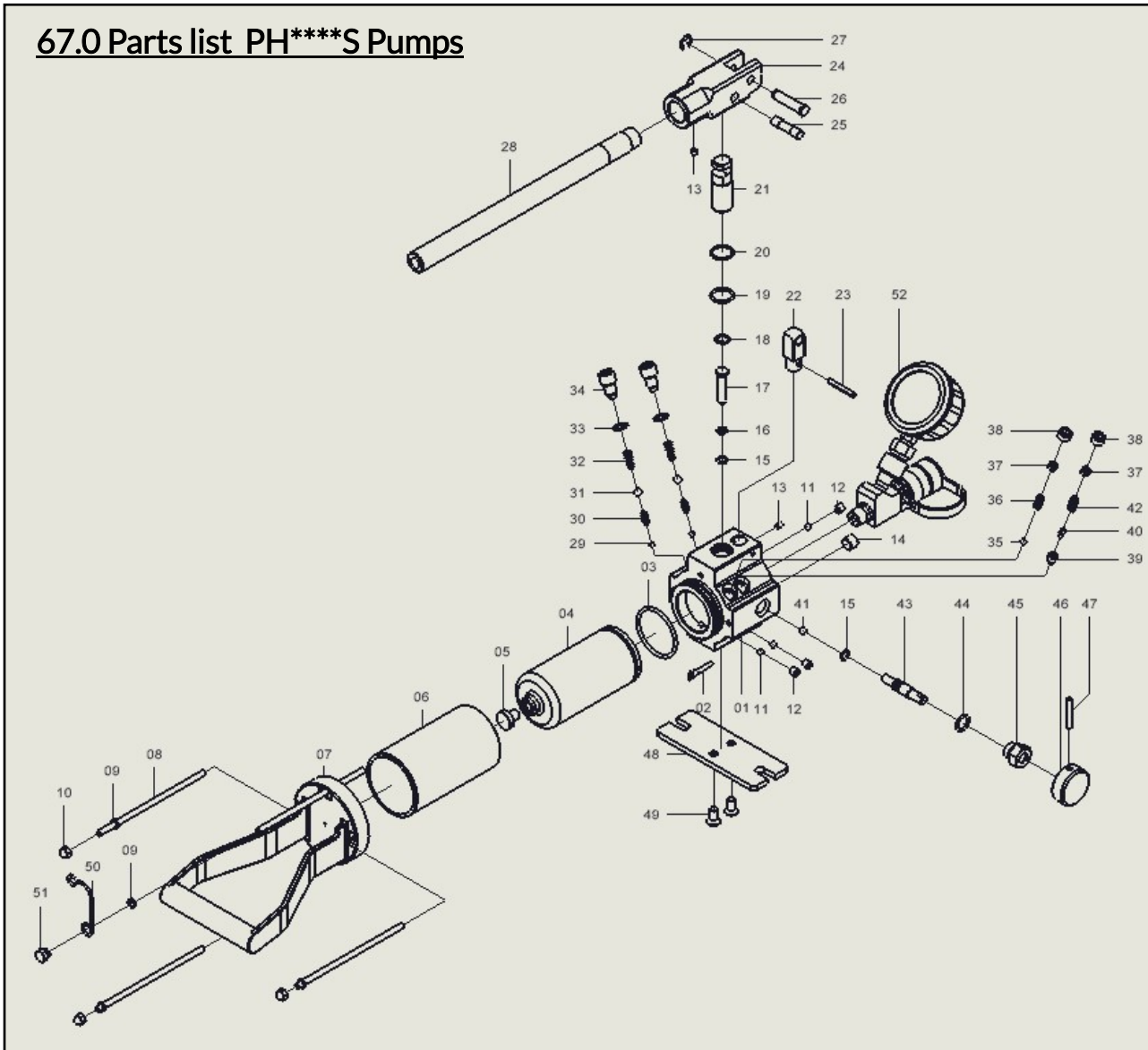
7.0 Parts list PH****S Pumps



Item	Part No :	Description :
01	NA	PHS Housing Block
02	180100501	Oil filter
03	180110041	Reservoir Bladder O Ring
04	180110031	PH300 Reservoir Bladder
04	180210011	PH580 Reservoir Bladder
04	180310031	PH1100 Reservoir Bladder
05	180110051	Reservoir Bladder Plug
06	180110091	PH300 Reservoir
06	180210021	PH580 Reservoir
06	180310041	PH1100 Reservoir
07	180110101	PH Base Handle
08	180110111	PH300 Reservoir Screw
08	180210031	PH580 Reservoir Screw
08	180310051	PH1100 Reservoir Screw
09	100200201	M6 Spring Washer
10	100200211	M6 Dome nut
11	180100241	Check Ball
12	180100251	Check Screw
13	100200031	M5 x 6 screw

Item	Part No :	Description :
14	180100511	PH Plug Screw
15	Kit 181100001	PH Piston Repair kit—high pressure seal
16	Kit 181100001	PH Piston Repair kit—high pressure back up ring
17	180100261	PH High Pressure Piston
18	Kit 181100001	PH Piston Repair kit—high pressure Circlip
19	Kit 181100001	PH Piston Repair kit— Low Pressure Seal
20	Kit 181100001	PH Piston Repair kit—Low Pressure Back up ring
21	180100291	PH Low Pressure Piston
22	180100051	PH Yoke Base
23	180100301	PH Yoke Spring Pin
24	180100311	PH Handle Yoke
25	180100061	PH Piston Drive Pin
26	180100071	PH Yoke Hinge Pin
27	180100321	PH Yoke Hinge Pin Circlip
28	180110101	PH Base Handle
29	Kit 181200001	PH Check Valve Repair kit— Small Check Ball
30	Kit 181200001	PH Check Valve Repair kit— Small Check Spring
31	Kit 181200001	PH Check Valve Repair kit— Large Check Ball
32	Kit 181200001	PH Check Valve Repair kit— Large Check Spring

67.0 Parts list PH**S Pumps**



Item	Part No :	Description :
33	Kit 181200001	PH Check Valve Repair kit– cover screw washer
34	Kit 181200001	PH Check Valve Repair kit– cover screw
35	180100371	PH Pressure Relief Ball
36	180100381	PH Pressure Relief Spring
37	180100391	PH Pressure Relief Screw
38	180100401	PH Pressure Relief Cover Screw
39	180100411	PH Cone Seat
40	180100421	PH Cone
41	Kit 181000001	PH Release Valve Repair Kit—Release Valve Ball
42	180100431	PH Pressure Relief Long Spring

Item	Part No :	Description :
43	Kit 181000001	PH Release Valve Repair Kit—Release Valve Spindle
44	Kit 181000001	PH Release Valve Repair Kit—Release Valve Packing Seal
45	Kit 181000001	PH Release Valve Repair Kit—Release Valve Nut
46	Kit 181000001	PH Release Valve Repair Kit—Release Knob
47	Kit 181000001	PH Release Valve Repair Kit—Release Knob Spring Pin
48	180100441	PH Base Plate
49	180100451	PH Base Plate Screw
50	180100461	PH Handle Clip
51	180100471	PH Handle Clip Nut
52	180110021	PH Hydraulic Pressure Gauge

Head Office :

RenQuip Ltd
 Unit 1 Dunnottar House
 Howe Moss Drive
 Dyce

info@renquip.com
 Tel : +44(0) 1224001861
 www.renquip.com